



INES

FOREIGN TRADE & MARITIME LTD. CO.

solution partner
foreign trade & maritime





INFORMATION

We Inas Company for Import, Export and International Trade
The company's headquarters Istanbul, Turkey
Second office is in Libya
The Third office is in Brazil.

Company Activity

Export full production lines and packing liens.

Mineral waters, which include the mobilization of lines.

Water treatment and processing of ozone stations.

Washing machines, packaging and locking.

Sticker machines.

Mobilization cups lines starting from 125 ml to 350 ml, full automatic.

Packaging of all types of chiller machines.

Air compressor High Pressure and Low Pressure.

Date printing machines, Video Jet and Ink Jet.

Ozone treatment devices generator.

Electricity Organizer of all kinds Sentatic Regulator.

Packaging Lines for soft drinks.

Food Stuff such as (Coffee, Chocolate, Healthy foods, Fruits, frozen meat, Juice, etc...)

Export all the raw materials and operating requirements for the production lines

Pet preform all types

Cap of all kinds

Sticker Label

Nylon packaging of all kinds Shrink film

Aluminum Folio all kinds Aluminum sheet / Aluminum lid

Pet sheet

Carton boxes

Plastic cups

Paper Cups



VERTEX SERIES REVERSE OSMOSIS EQUIPMENT

سلسلة التناضح العكسي العلوي

Type	Raw Water (m3/date)	Output (%)	Product (m3/date)	Waste (m3/date)	Membrane				RO Device Installation			Cartridge Filter	High Pressure Pump	
					Sequence	Sheath	Membrane	T. Membrane	Input	Product	Waste	Type	Type	Power(Kw)
AQUAMAB-RO-900	5	40	2	3,0		1	4"x21"	1	3/4"	1/2"	1/2"	10"		0,75
VERTEX RO 1X1	8,3	60	5	3,3		1	4"x40"	1	3/4"	1/2"	1/2"	20"		0,75
VERTEX RO 2X1	16,7	60	10	6,7	1:1	2	4"x40"	2	1"	1/2"	1/2"	20"	QDLF2-110	1,1
VERTEX RO 3X1	25	60	15	10,0	2:1	3	4"x40"	3	1"	1/2"	1/2"	10" Big Blue	QDLF2-130	1,5
VERTEX RO 4X1	33,3	60	20	13,3	2:2	4	4"x40"	4	1"	1/2"	1/2"	20" Big Blue	QDLF2-130	1,5
VERTEX RO 5X1	45,5	55	25	20,5	3:2	5	4"x40"	5	1"	3/4"	3/4"	20" Big Blue	QDLF2-130	1,5
VERTEX RO 3X2	50,0	60	30	20,0	1:1	2	4"x40"	6	1"	3/4"	3/4"	3x20"	QDLF2-150	1,5
VERTEX RO 4X2	61,5	65	40	21,5	1:1	2	4"x40"	8	1"	3/4"	3/4"	3x20"	QDLF2-180	2,2
VERTEX RO 5X2	76,9	65	50	26,9	1:1	2	4"x40"	10	1,5"	1"	1"	5X20"	QDLF2-220	2,2
VERTEX RO 4X3	100,0	65	65	35,0	2:1	3	4"x40"	12	1,5"	1"	1"	7X20"	QDLF4-140	3
VERTEX RO 4X4	130,8	65	85	45,8	2:2	4	4"x40"	16	1,5"	1"	1"	5X30"	QDLF4-160	3
VERTEX RO 5X4	153,8	65	100	53,8	3:2	5	4"x40"	20	1,5"	1"	1"	7X30"	QDLF4-190	4

Note: Values are maximum rates in the table for 24-hour study under 1000 ppm TDS and Feed Water Temperature 15 ° C.

VERTEX SERIES STANDART SPECIFICATIONS

- Stainless steel or epoxy painted carbon steel frame
- Low and high pressure line U-PVC (PN20) Tubing
- Vertical shaft SS304 stainless steel centrifugal pump
- FRP membrane container
- Autoflush system
- IP 56 Control Panel
- Status Control and warning lights
- Low Pressure Switch
- Flow meters of clean and waste water
- Input solenoid valve
- Conductivity meter of product water





APEX SERIES REVERSE OSMOSIS EQUIPMENT

سلسلة التناضح العكسي السفلي

Type	Raw Water (m3/date)	Output (%)	Product (m3/date)	Waste (m3/date)	Membrane				RO Device Installation			Cartridge Filter	High Pressure Pump	
					Sequence	Sheath	Membrane	T. Membrane	Input	Product	Waste	Type	Type	Power(Kw)
APEX RO 2X3	263,2	57	150	113,2	1:1	2	8"x40"	6	2"	2"	2"	10X30"	QDLF8-160	5,5
APEX RO 2X4	307,7	65	200	107,7	1:1	2	8"x40"	8	2"	2"	2"	10X30"	QDLF16100	11
APEX RO 2X5	357,1	70	250	107,1	1:1	2	8"x40"	10	2"	2"	2"	10X30"	QDLF16100	11
APEX RO 2X6	428,6	70	300	128,6	1:1	2	8"x40"	12	2"	2"	2"	10X30"	QDLF16100	11
APEX RO 3X6	642,9	70	450	192,9	2:1	3	8"x40"	18	2,5"	2"	2"	10X40"	QDLF32-70-2	15
APEX RO 4X6	785,7	70	550	235,7	2:2	4	8"x40"	24	2,5"	2"	2"	10X40"	QDLF32-70	15

Note: Values are maximum rates in the table for 24-hour study under 1000 ppm TDS and Feed Water Temperature 15 ° C.

APEX SERIES STANDART SPECIFICATIONS

- Stainless steel frame
- Low pressure line PVC, High-pressure line SS304 stainless steel piping
- Vertical shaft SS304 stainless steel centrifugal pump
- FRP membrane container
- Autoflush system
- IP 56 Control Panel
- Status Control and warning lights
- Low Pressure Switch
- Flow meters of clean and waste water
- Input solenoid valve
- Conductivity meter of product water





ULTRA FILTRATION SYSTEMS

نظام الترشيح الفائق

UF USAGE AT THE SPRING WATER BOTTLING PLANT

Allows changing the chemical properties of the water bottling of spring water

SURFACE WATER FILTRATION

It is possible to filtration from valley, lake with Ultrafiltration system.

SEA WATER FILTRATION

Ultrafiltration is used into sea water filtration as Reverse osmosis pre-filtration

UF USE OF THE FOOD AND BEVERAGE INDUSTRY

UF technique completely separates living things in the water and uses in providing process water

WASTE WATER FILTRATION

Using for The second or third level of filtration of waste water.

- Steril water can be produced with UF technique which as low as 0.02 microns

UF ultra filtration

- UF systems , that of food, and beverage industries and successfully applied in around the city, produce healthy water.

UF METHOD ADVANTAGES

- Fully automatic back flushing and self-disinfection feature with hands-off
- UF Units easily throws out the solids. For this reason, before UF, water is sufficient filtered at 100-150 micron level
- UF system is backwashing , water flow rate of 3% - 5% of the water remains
- UF units are long lasting, filter cartridges do not change as often.
- UF system occupies very little space.





FULLY AUTOMATIC MULTIMEDIA SAND FILTERS

مرشح الرمل الاوتوماتيكي متعدد الوظائف

Fully Automatic Multimedia Sand Filters

Physical filtration are used to remove solid particles, causing to undesirable results such as turbidity and sediment. Through the filter valve without the need for human intervention, solid particles maintained throws to drainage by backwashing at the set time.

Description	m3/hour	Waste (bar)	Service (inch)	Drainage (inch)	cm	Amount of media (kg)
AQUAMAB-1035 AG	1,3	0,2	1"	1"	25x89	25
AQUAMAB-1054 AG	1,3	0,2	1"	1"	25x137	50
AQUAMAB-1252 AG	1,9	0,2	1"	1"	30x132	75
AQUAMAB-1354 AG	2,2	0,3	1"	1"	33x137	80
AQUAMAB-1465 AG	2,5	0,3	1"	1"	36x165	100
AQUAMAB-1665 AG	3,3	0,3	1"	1"	41x165	130
AQUAMAB-1865 AG	4,1	0,5	1"	1"	46x165	170
AQUAMAB-1465 AG	2,5	0,3	2"	2"	36x165	100
AQUAMAB-1665 AG	3,3	0,3	2"	2"	41x165	130
AQUAMAB-1865 AG	4,1	0,5	2"	2"	46x165	170
AQUAMAB-2070 AG	5,6	0,5	2"	2"	53x158	220
AQUAMAB-2472 AG	7,3	0,5	2"	2"	61x183	320
AQUAMAB-3072 AG	11,4	1	2"	2"	76x183	500
AQUAMAB-3672 AG	16,4	1	2"	2"	92x183	720
AQUAMAB-4272 AG	20,5	1	3"	3"	105x183	1000
AQUAMAB-4872 AG	29,2	1	3"	3"	122x183	1450

Cross-sectional rates of 25 m/h was taken

Media density 1.5 kg

Media blistering share of 40% was





VERTICAL MULTI-STAGE PUMPS STAINLESS STEEL APPLICATIONS FOR REVERSE OSMOSIS

مضخات التناضح العكسي العمودي متعدد المراحل مقاوم للصدا

APPLICATION AREAS

Water Treatment Plants
Reverse Osmosis Systems
High Pressure Water Supply

FEATURES

Pump Chassis	ss304
Shaft	ss316
Propeller	ss304
Propeller Shelves	ss304
Suction Pressure Cylinder	ss304
Input / Output Inductor	ss304



Branded MAB multi-stage vertical pumps of all components that come into contact with water such as impeller, diffuser and shaft, are made of corrosion-resistant AISI stainless steel and designed to provide the best possible hydraulic efficiency.





STAINLESS STEEL BOOSTER SYSTEMS

نظام معزز بالستانلس تيل المقاوم للصداء

MODELS WITH SINGLE PUMP

BOOSTER MODEL	VOLTAGE	POWER		CAPASITE/ L/h	Pressure Range (bar)	CONNECTION		Balance Tank	Connection set
		HP	KW						
1 MSS 4 - 50	380	1,5	1,1	5 000 - 3 000	3 - 4,5	1 1/4"	1 1/4"	100 Lt	1"
1 MSS 4 - 60	380	1,5	1,1	5 000 - 3 000	4 - 5,5	1 1/4"	1 1/4"	100 Lt	1"
1 MSS 4 - 80	380	2	1,5	5 000 - 3 000	5,5 - 7	1 1/4"	1 1/4"	100 Lt	1"
1 MSS 4 - 100	380	3	2,2	5 000 - 3 500	6,5 - 8	1 1/4"	1 1/4"	100 Lt	1"
1 MSS 4 - 120	380	3	2,2	7 000 - 4 000	6-10	1 1/4"	1 1/4"	100 Lt	1"
1 MSS 4 - 140	380	4	3	8 000 - 4 000	6-10	1 1/4"	1 1/4"	200 Lt	1"

MODELS WITH TWO PUMPS

BOOSTER MODEL	VOLTAGE	POWER		CAPASITE/ L/h	Pressure Range (bar)	CONNECTION		Balance Tank	Connection set
		HP	KW						
2 MSS 4 - 50	380	2 X 1,5	2 X 1,1	10 000 - 6 000	3 - 4,5	1 1/2"	1 1/2"	100 Lt	1 1/4"
2 MSS 4 - 60	380	2 X 1,5	2 X 1,1	10 000 - 6 000	4 - 5,5	1 1/2"	1 1/2"	100 Lt	1 1/4"
2 MSS 4 - 80	380	2 X 2	2 X 1,5	10 000 - 6 000	5,5 - 7	1 1/2"	1 1/2"	200 Lt	1 1/4"
2 MSS 4 - 100	380	2 X 3	2 X 2,2	10 000 - 7 000	6,5 - 8	1 1/2"	1 1/2"	200 Lt	1 1/4"
2 MSS 4 - 120	380	2 X 3	2 X 2,2	14 000 - 8 000	6-10	1 1/2"	1 1/2"	200 Lt	1 1/4"

MODELS WITH THREE PUMPS

BOOSTER MODEL	VOLTAGE	POWER		CAPASITE/ L/h	Pressure Range (bar)	CONNECTION		Balance Tank	Connection set
		HP	KW						
3 MSS 4 - 50	380	3 X 1,5	3 X 1,1	15 000 - 9 000	3 - 4,5	2"	2"	200 Lt	1 1/4"
3 MSS 4 - 60	380	3 X 1,5	3 X 1,1	15 000 - 9 000	4 - 5,5	2"	2"	200 Lt	1 1/4"
3 MSS 4 - 80	380	3 X 2	3 X 1,5	15 000 - 9 000	5,5 - 7	2"	2"	200 Lt	1 1/4"
3 MSS 4 - 100	380	3 X 3	3 X 2,2	15 000 - 10 500	6,5 - 8	2"	2"	200 Lt	1 1/4"
3 MSS 4 - 120	380	3 X 3	3 X 2,2	21 000 - 12 000	6-10	2"	2"	300 Lt	1 1/4"



PRESSURE SPECIFICATIONS

- * Highly efficient, super quiet vertical multi-stage pumps are grouped into types.
- * Booster is ready to mount with appropriate volume balance tank, flexible connectivity kit and protective control panel as a complete package
- * Suitable capacity models can be converted into a fire booster by adding weekly programmed testing device
- * It has suction and discharge mouth on the same line, the opposite side through specially designed pumps. Thus, booster is intended to be very easy installation.



PUMP TECHNICAL SPECIFICATIONS

Mechanical seal	: Carbon / Ceramic
Propeller	: AISI 304 Stainless Steel
Pump Body	: AISI 304 Stainless Steel
Suction - Discharge mouth	: AISI 304 Stainless Steel
Pump Shaft	: AISI 316 Stainless Steel
Shaft bearing Chassis	: AISI 304 Stainless Steel
Protection Level	: IP 55
Insulation Class	: F
Operating pressure	: 12 bar



SURFACE PIPING SOFTENING SYSTEMS

نظام تليين سطح الانابيب

SURFACE PIPING SOFTENING SYSTEMS

TYPE	DIMENTION OF TANK		SERVICE FLOW (m3/h)		
	diameter	height	30 m3/h	40 m3/h	Amount of resin
MAB-YB-14	1400	2500	46	61	1300 LT
MAB-YB-15	1500	2600	53	71	1450 LT
MAB-YB-15-3	1500	3250	53	71	1950 LT
MAB-YB-16	1600	2600	60	80	1600 LT
MAB-YB-16-3	1600	3300	60	80	2200 LT
MAB-YB-18	1800	2700	76	102	2900 LT
MAB-YB-18-3	1800	3500	76	102	3250 LT
MAB-YB-19	1900	2800	85	113	3000 LT
MAB-YB-19-3	1900	3600	85	113	3400 LT
MAB-YB-20	2000	2800	94	125	3250 LT
MAB-YB-20-3	2000	3600	94	125	3900 LT

STANDARD FEATURES	ADVANTAGES	DESIGN CRITERIA
<ul style="list-style-type: none"> • 4-8 bar operating pressure, 10 bar testing pressure • Internal and external epoxy, primer painted or galvanized ST-37 carbon steel tank • Easy application for control valves and surface piping systems • Automatic control mechanism (Time, Flow, or PLC) • Compatible with food regulation for using resin • Polyethylene salt tanks • The water provides a uniform distribution of the lateral and diffuser system 	<ul style="list-style-type: none"> • Ease of operation without requiring operator • Low operating cost • Low energy cost • 24 hours water supply 	<ul style="list-style-type: none"> • Filtration rate 10-40 m3/m2/h • Backwash time 110 min • Backwash rate 10 m/h



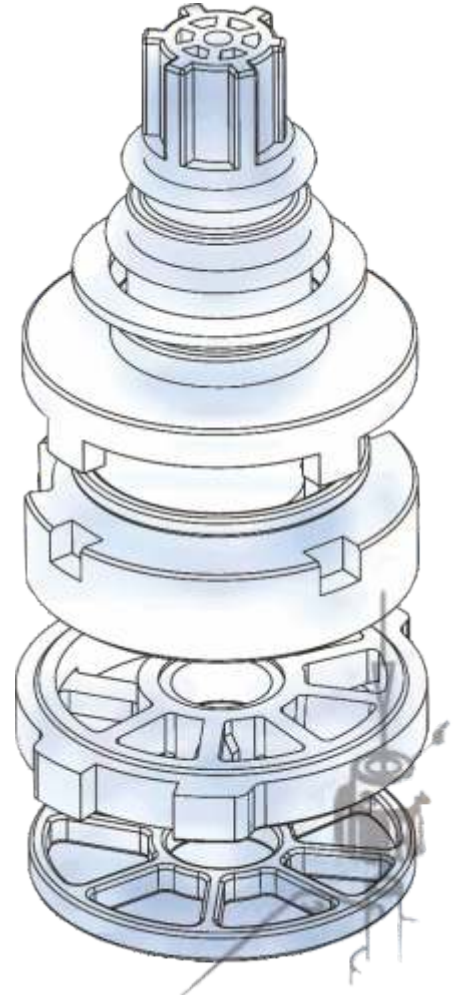


FILTRATION AND SOFTENER VALVES

ترشيح و تليين الصمامات

- The main part of a valve is its ceramic disks.
- One of them is fixed and the other one turns driven by electric motor.
- There is no gaskets nor pistons, watertightness is guaranteed between the both two ceramic disks.
- Stages are detected by accurate electromagnetic sensors, not any electromechanical one is assembled.

Display shows true data about system capacity.
Easy programming through the keyboard.



- Pressure vessel size from 6" up to 48"
- Resin capacity from 8,5L up to 1200L
- Up-flow or Down-flow regeneration
- Manual control of stages
- Washing start by pressure switch signal
- Chronometric regeneration program in days or hours
- Volumetric regeneration
- Semiauto regeneration, manual start and auto stages
- Inlet, outlet and drain connections from 3/4" up to 2"
- Perssure vessel connection 2 1/2" and 4"
- Interlock connection up to 32 valves





ULTRAFILTRATION SYSTEMS

التصفية الدقيقة

Ultrafiltration provides maximum level of improvement in all physical qualities of water, without any change in chemical structure of water. Thanks to ultrafiltration technology, suspended solids in water, colour pigments up to 99% and, most importantly, bacteria and viruses which may exist in water can be totally removed. This method provides a great advantage especially in treatment of drinking water and food processing. In treatment process, raw water flowing through capillary tubes is passed through pores in size of 25 angstrom on membrane surface by means of pumps which do not require high pressure. Structure of membrane is in form of capillary tubes and it functions through cross flow method.

نظام التصفية الدقيق يقوم بتحسين مستوى الماء في كل خواصه الفيزيائية بشكل أفضل وذلك بدون أن يحدث أي تغيير في التركيب الكيميائي للماء.

بفضل تقنية التصفية الدقيقة، يتم التخلص من المواد العالقة في الماء ومن التعكر و 99% من المواد الصبغية الأهم من ذلك إزالة البكتيريا والفيروسات الموجودة في الماء

هذه الطريقة تكسبنا ميزة وفوائد مهمة جداً وتنقية مياه الينابيع ومياه الشرب وخاصة المستخدمة في الصناعات الغذائية والمشروبات.

إن تركيب الأغشية هو عبارة عن شكل أنبوبي شعري يعمل بنظام التدفق المتقاطع.

تتم عملية التنقية هنا بدخول الماء الختم عبر الأنابيب الشعرية، فينفذ من ممسامات يبلغ قطرها 25 أنغستروم موجودة على الغشاء.

تتم عمليات غسل النظام وتنظيفه آلياً ويشغل النظام بدون حاجة إلى أي تدخل بشري في الجهاز. وأنظمة التنقية الدقيقة التي موجودة







ENGINEERING, MANUFACTURING, INSTALLING & AFTER SALES SERVICES

أنظمة تنقية مياه الشرب خدمات التصميم، والتصنيع، والتركيب

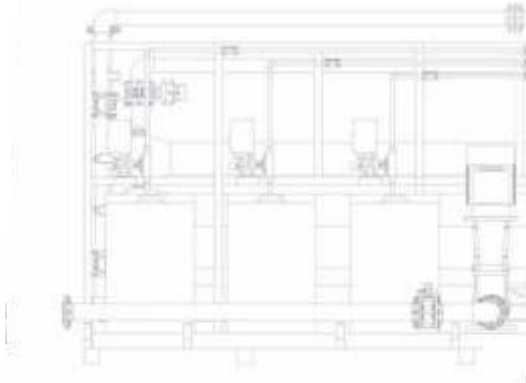
Water Technologies, has been giving services in drinking water treatment processes from ultrafiltration to reverse osmosis and ozonation.

Providing engineering in system design, manufacturing, installation and after sales services for the complete systems.

All the units - ultrafiltration, reverse osmosis and ozonation in water treatment system is controlled on the Automation Panel easily.

تقنيات برودا للمياه؛ تصميم الأنظمة الضرورية من أجل تحويل المياه إلى مياه صالحة للشرب، وتقديم خدمات التصميم والتركيب وخدمات الدعم الفني بعد البيع.

وعند القيام بتصميم وتخطيط النظام فإنه يتماعتماد الخصائص الكيميائية والميكروبيولوجية للمياه. وبهدف الاستخدام المناسب فإنه يتم التسليم الكامل (بشكل جاهز للاستعمال) للبرامج المتوفرة مع بعضها، كبرامج التصفية الدقيقة والتناضح العكسي والمعالجة بالأوزون المصممة، والتي يمكن أن تنشأ بشكل منفصلة عن بعضها البعض، كما يتم أيضاً تقديم خدمات التصميم والتركيب والتصنيع. كما أن التقنيات المتطورة المستخدمة ستوفر عمل جميع الوحدات وضبطها بواسطة أجهزة ال PLC.



Raw Water
دخول الماء الخام

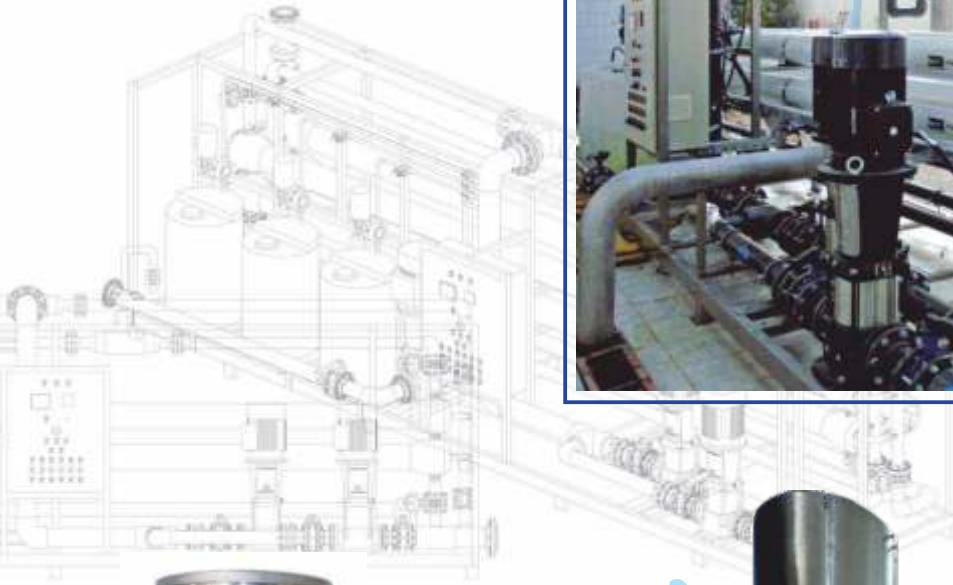
Raw Water
Tank
خزان الماء الخام

Ultrafiltration
التصفية الدقيقة

Reverse Osmosis
التناضح العكسي

Product Water Tank
خزان الماء المنتج





Ozone Gas
نظام تماس الأوزون



- Bottling Water ✓
- خطوط تعبئة زجاجات اللماء
- Food Processing ✓
- معالجة الأطعمة
- Drinking Water ✓
- مياه الشرب
- Beverage ✓
- عصير الفواكه/المشروبات
- Hotel ✓
- الفندق
- Hospital ✓
- المستشفى
- Farming ✓
- تربية الحيوانات الاعتناء بها



REVERSE OSMOSIS SYSTEMS, SEA WATER REVERSE OSMOSIS SYSTEMS

التناضح العكسي، التناضح العكسي لماء البحر

REVERSE OSMOSIS SYSTEMS

Reverse osmosis systems are the special systems to remove the high amount of salts and minerals from the water especially in cases when conventional treatment systems are insufficient. Our reverse osmosis units are specially arranged according to the customer's need from design to production stage. All the equipments used in production of reverse osmosis units are selected among high quality materials.

التناضح العكسي، التناضح العكسي لماء البحر

التناضح العكسي (RO)

نظام التناضح العكسي هو عبارة عن نظام خاص يتم استخدامه في الحالات التي تعجز فيها أنظمة التصفية التقليدية القيام بتصفية المياه البحرية ومياه الآبار ذات الناقلية العالية. وبفضل نظام التناضح العكسي يمكن تنقية المياه بجودة عالية. ومبدأ عمل نظام التناضح العكسي، يتم بواسطة الغشاء الشبه نفوذ الموجود على الجهاز، فالماء الذي سيتم تنقيته يمر من المسامات بحجم 5 أنغستروم الموجودة على الأغشية وذلك بواسطة مضخة الضغط العالي ويتم بهذه العملية تنقية هذا الماء. ويمكن استخدام نظام التناضح العكسي المحترف والأتمتة برودا؛ فإن جميع الوحدات التي تأخذ حيز في نظام التناضح العكسي يتم التحكم بها عن طريق متابعتها من قبل أجهزة ال PLC ذات شاشة اتصال سمينز.

SEA WATER REVERSE OSMOSIS SYSTEM

Our Sea Water Reverse Osmosis Systems are designed to produce drinking water from sea water. Operating under high pressure, the system removes the salts and minerals in sea water. Thanks to energy recycle units, highly economical designs are available. Sea Water Reverse Osmosis units are specially arranged according to the customer's need from design to production stage. All the equipment used consists of anticorrosive materials resistant against sea water. Use of high quality equipments provide high system performance for long periods. Our Sea Water Reverse Osmosis systems decrease your operating costs while increasing your production quality.

التناضح العكسي لماء البحر

أنظمة التناضح العكسي لتنقية ماء البحر، تقوم بتنقيته وتحويله إلى ماء صالح للشرب. وللاستعمال. وكل المعادلات المستخدمة في وحدات التناضح العكسي تكون مقاومة لمياه البحر، ولطريقة وحدة التحكم والأتمتة فإن الأنظمة المصممة تعمل بشكل آلي تماماً.







DISINFECTION / OZONATION

التعقيم / استخدام الأوزون

Disinfection Systems; are used for enhancing the storage and shelf life of water by means of destroying harmful waterborne microorganisms such as bacteria, cysts and protozoa, using ozone, UV light, microfiltration and other approved technologies.

أنظمة للتعقيم، تقوم بإزالة الكائنات الحية الدقيقة المسببة للأمراض الموجودة في ماء الشرب وتزيد من عمر تخزين واستخدام هذه المياه. وفي أنظمة برودا التي يتم فيها اقتراح وسائل مختلفة حسب غايات الاستخدام تقنيات الأوزون والأشعة فوق بنفسجية وغيرها من التقنيات المصدق عليها.







DRYAIR DA SERIES HEATLESS DESICCANT COMPRESSED AIR DRYERS

General Features

- DryAir DA desiccant air dryers provide constant -40°C pressurized dew point.
- DryAir DA series is designed to supply clean and quite dry compressed air for critical applications.
- Pre-filters and after-filters are supplied along with the series to keep the air stream clean and to maintain the integrity of the desiccant material.
- Reliable electronic controller integrated to the dryer ensures that the dryer operates flawlessly through its service life.
- Special design valves and desiccants are employed in the series to provide the lowest pressure drop in the market.

Principle of Operation

- The twin tower design allows for continuous adsorption of water vapor from compressed air by using hygroscopic desiccant with high crush strength and surface/volume ratio.
- Drying is accomplished by passing compressed air through a desiccant bed adsorbing the moisture while the other bed is simultaneously regenerated with the expanded purge air. Regeneration of the desiccant material is realized without heat. The wet bed is dried by diverting a small portion of the super-dry air from the outlet at almost atmospheric pressure. The purge flow rate is adjustable to suit specific outlet conditions (i.e. desired pressurized dew point). The super-dry air flows in opposite direction through the wet bed, sweeping all the water vapor previously adsorbed by the desiccant.
- DryAir DA series ensures the pressure equalization in the twin towers prior to switching.
- This action prevents line surge and minimizes desiccant abrasion. The tower being reactivated is gradually re-pressurized at the end of its reactivation cycle before switchover happens. Purge flow and de-pressurization are in downward direction, opposite to the drying air flow.

Control Unit

- DryAir DA series has a quite reliable electronic controller ensures the flawless operation of the dryer through the service life.
- Touchscreen PLC unit is capable of displaying real time operation and valve statuses as well as real time pressurized dew point if applicable.
- User-friendly multi-lingual PLC panel helps the end-users understand the operation status and monitor the field issues easily.





DRYAIR DBP SERIES HEATED DESICCANT COMPRESSED AIR DRYERS

General Features

- DryAir DBP series dryers provide constant -40°C pressurized dew point.
- The series dryers are designed to operate at 7 bars inlet pressure, 35°C inlet temperature and 100% inlet air relative humidity normally.
- DBP series is designed to cope with maximum 12 bar(g) working pressure.
- Dew point monitoring and control
- Computer control
- Display status, alarms and pressure
- Remote start-stop function
- Minimum pressure valve and low pressure alarm
- High pressure switched and alarms
- Integrated externally heated or heatless dryer functions available in one package.

Principle of Operation

- A centrifugal blower and high efficiency heater eliminate the use of valuable compressed air to be used for desiccant regeneration.
- The full-automatic drying system uses blower to pull ambient air and passes it through the heater. This hot air steam flows opposite to the drying flow direction.
- Hot air above 200°C regenerates the moisture inside desiccant bed and separates the desiccant material from moisture completely.
- The advanced control system monitors the dew point level and adjusts the heating/regeneration cycles accordingly which results in massive energy savings.
- The heater circuit is completely insulated to ensure maximum heating efficiency.





DRYAIR DK SERIES REFRIGERATED TYPE COMPRESSED AIR DRYERS

General Features

- 3°C pressurized dew point
- Very low pressure drop
- Designed for tropical conditions
- Capable of running with rated flow at 60°C maximum inlet temperature and 55°C ambient temperature thanks to R-134a refrigerant and oversized condenser
- Compact design
- Standard digital controller with energy saving features and alarm capabilities (In all 3 phase models)
- Aluminum plate heat exchanger in cylindrical form
- Easy to access cooling components thanks to screw free panels and plastic handles.
- Hermetic type compressors from DryAir DK 10 to 110 and scroll type compressors from DK 120 to 260
- Electrical box separated from refrigerant side providing easy maintenance without opening the dryer.





DMD SERIES MODULAR HEATLESS DESICCANT COMPRESSED AIR DRYERS

New DMD series modular desiccant dryers combine proven traditional dryer principles with the latest technology to provide supreme efficiency, flexibility and reliability for critical dryer applications.

General Features

- The lightweight modular design of DMD series dryers brings new concept in compressed air technology, offering total installation flexibility to meet specific needs.
- DMD series dryers are less than half size and weight of a traditional twin tower design, providing even the largest models to be easily moved through a standard doorway.
- Not only DMD dryers can be mounted on the wall via mounting brackets to win more space but also they can be placed on the ground easily.
- Delivering high quality compressed air for virtually wherever it's needed becomes easier and more affordable with DMD series.
- The cosmetic beauty of the series allows the end-user to locate it in clean environments without any problems.
- The mini PLC unit is quite user-friendly. It's capable of showing the real time operation status as well as sending alarms to a remote location via an easy-access Ethernet plug below the unit.
- Offered in a wide range sizes from 5 m³/h to 400 m³/h, with pressurized dew points -40°C and 70°C, they are packed with everything needed, requiring only air inlet/outlet connections.

Highlights

- Small footprint, lightweight, advanced compact design
- Corrosion-free aluminum construction
- Hassle-free, reliable electronic systems control
- Floor, bench or wall mountable
- Quiet enough to be placed in any working environment without hesitation
- Easy installation, easy maintenance





Tüm İhtiyaçlarınıza Uygun Ürün Portfoyümüz İle
Lineer Şişirme Makinası

With Our Product Portfolio Which Is Suitable For All Your Needs
Lineer Pet Blowing Machine

مع مجموعات منتجاتنا مناسبة لكل احتياجاتكم
ماكينة النفخ الخطي





كapasitelerimiz السعة: Capacity

0,5-1,5 LT ŞİŞİRME MAKİNALARI / 0,5-1,5 LT BLOWING MACHINE

MODEL	ŞİŞE BOYUTLARI (BOTTLE SIZE)	KAPASİTE (CAPACITY)	KALIP SAYISI (THE NUMBER OF MOLD)
BLW13C2-SRV	0,25 lt - 2 lt kadar / from 0,25 lt to 2 lt	18.000 şişe (bottles) / saat (hour)	13
BLW8C2-SRV	0,25 lt - 2 lt kadar / from 0,25 lt to 2 lt	12.000 şişe (bottles) / saat (hour)	8
BLW4C2-SRV	0,25 lt - 2 lt kadar / from 0,25 lt to 2 lt	6.000 şişe (bottles) / saat (hour)	4
BLW2C2-SRV	0,25 lt - 2 lt kadar / from 0,25 lt to 2 lt	3.000 şişe (bottles) / saat (hour)	2

5-10 LT ŞİŞİRME MAKİNALARI / 5-10 LT BLOWING MACHINE

MODEL	ŞİŞE BOYUTLARI (BOTTLE SIZE)	KAPASİTE (CAPACITY)	KALIP SAYISI (THE NUMBER OF MOLD)
BLW4C10-SRV	5 lt'den 10 lt'ye kadar / from 5 lt to 10 lt	4.500 şişe (bottles) / saat (hour)	4
BLW2C10-SRV	5 lt'den 10 lt'ye kadar / from 5 lt to 10 lt	2.000 şişe (bottles) / saat (hour)	2

19 LT ŞİŞİRME MAKİNALARI / 19 LT BLOWING MACHINE

MODEL	ŞİŞE BOYUTLARI (BOTTLE SIZE)	KAPASİTE (CAPACITY)	KALIP SAYISI (THE NUMBER OF MOLD)
BLW4C19-SRV	19 lt	2.200 şişe (bottles) / saat (hour)	4
BLW2C19-SRV	19 lt	1.100 şişe (bottles) / saat (hour)	2
BLW1C19-SRV	19 lt	600 şişe (bottles) / saat (hour)	1

آلات النفخ 0.5 لتر – 1.5 لتر

الموديل	القدرة	ابعاد القوارير	عدد القوالب
BLW13C2-SRV	18 قنينة/ساعة	من 0,25 لتر الى 2 لتر	13
BLW8C2-SRV	12.000 قنينة/ساعة	من 0,25 لتر الى 2 لتر	8
BLW4C2-SRV	6.000 قنينة/ساعة	من 0,25 لتر الى 2 لتر	4
BLW2C2-SRV	3.000 قنينة/ساعة	من 0,25 لتر الى 2 لتر	2

آلات النفخ 5 لتر – 10 لتر

الموديل	القدرة	ابعاد القوارير	عدد القوالب
BLW4C10-SRV	من 5 لتر الى 10 لتر	4.500 قنينة/ساعة	13
BLW2C10-SRV	من 5 لتر الى 10 لتر	2.000 قنينة/ساعة	2

آلات النفخ 19 لتر

الموديل	القدرة	ابعاد القوارير	عدد القوالب
BLW4C19-SRV	19 لتر	2.200 قنينة/ساعة	4
BLW2C19-SRV	19 لتر	1.100 قنينة/ساعة	2
BLW1C19-SRV	19 لتر	600 قنينة/ساعة	1





Tek Parça Gövde Üzerinde Çalkalama - Dolum - Kapatma Üçlüsü İle (Monoblok)

Gazlı Dolum Makinası

On One Piece Body, With Rinsing - Filling - Capping Combination (Monobloc)

Carbonated Soft Drink Filling Machine

ماكينة شاملة على اجهزة الغسيل والتعبئة والاغلاق
ماكينة التعبئة الغازية



KAPASİTELERİMİZ / CAPACITY	الطاقة الانتاجية
16-24-6 Model 5.000 bph	5000 قارورة / ساعة واحدة موديل بي ار اف سي 4-16-12
20-30-8 Model 7.000 bph	7000 قارورة / ساعة واحدة موديل بي ار اف سي 8-30-20
24-36-8 Model 9.000 bph	9000 قارورة / ساعة واحدة موديل بي ار اف سي 4-20-16





Pet Dolum Makinası

Monoblog (0,25 lt - 2 lt)

Monoblog (3 lt'den - 10 lt)

Pet Bottle Filling Machine

Monobloc (0,25 lt - 2 lt)

Monobloc (3 lt'den - 10 lt)

ماكينة تعبئة القناني البلاستيكية

شاملة على أجهزة الغسيل والتعبئة والاعلاق





LIQUID FILLING MACHINE (TWO LINE)

ماكينة تعبئة (٢ قنوات)



LIQUID FILLING MACHINE (TWO LINE)

Raw Material: Stainless Steel

Capacity: Max. 3000 cups/hour (for. 200 cc)

Air Compression: 6-8 bar (kg./cm²)

Compressed Air Waste: 1000 lt/min.

Control Unit: PLC - Inverter

ماكينة تعبئة (٢ قنوات)

المواد المستعملة : حديد صلب غير قابل للصدأ

السعة: 3000 عدد/ الساعة

ضغط الهواء للموتور الضاغط: 6-8 بار

مقدار تدفق الهواء : 1000 لتر في الدقيقة

وحدة التحكم : بي ل سي





LIQUID FILLING MACHINE (FIVE LINE)

ماكينة تعبئة (ب ٥ قنوات)



LIQUID FILLING MACHINE (FIVE LINE)

Raw Material: Stainless Steel

Capacity: Max. 7200 cups/hour (for. 200 cc)

Air Compression: 6-8 bar (kg./cm²)

Compressed Air Waste: 2000 lt/min.

Control Unit: PLC - Inverter

ماكينة تعبئة (ب ٥ قنوات)

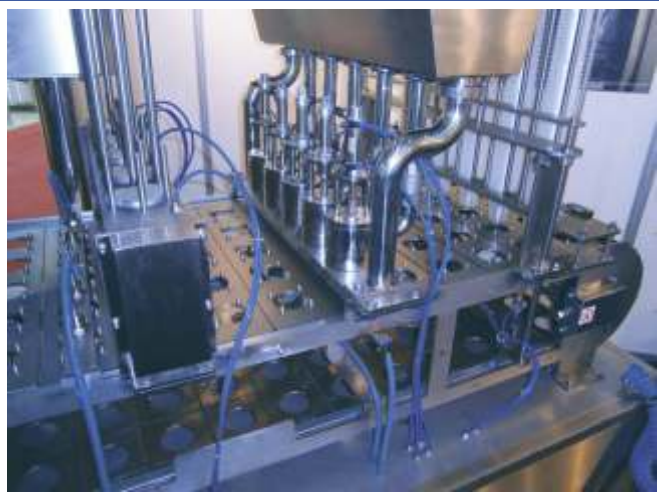
المواد المستعملة : حديد صلب غير قابل للصدأ

السعة : 7200 عدد/ الساعة

ضغط الهواء للموتور الضاغط : 6-8 بار

مقدار تدفق الهواء : 2000 لتر في الدقيقة

وحدة التحكم : بي ل سي





FILLING MACHINE CREAM CHEESE (TWO LINE)

ماكينة تعبئة كريمة الجبنة (ب ٢ قنوات)



FILLING MACHINE CREAM CHEESE (TWO LINE)

Raw Material: Stainless Steel

Capacity: Max. 2000 cups/hour (for. 200 gr.)

Air Compression: 6-8 bar (kg./cm²)

Compressed Air Waste: 2000 lt/min.

Control Unit: PLC - Inverter

ماكينة تعبئة كريمة الجبنة (ب ٢ قنوات)

المواد المستعملة : حديد صلب غير قابل للصدأ

السعة : 2000 عدد/ الساعة

ضغط الهواء للموتور الضاغط : 6-8 بار

مقدار تدفق الهواء : 2000 لتر في الدقيقة

وحدة التحكم : بى ل سى





ROTARY LIQUID FILLING MACHINE

Raw Material: Stainless Steel

Capacity: Max. 1350 cups/hour (for. 200 cc)

Air Compression: 6-8 bar (kg./cm²)

Compressed Air Waste: 400 lt/min.



مكينة تعبئه فرديه بشكل دائري روتاري

المواد المستعملة : حديد صلب غير قابل للصدأ

السعة: 1350 عدد/ الساعة

ضغط الهواء للموتور الضاغط : 6-8 بار

مقدار تدفق الهواء : 400 لتر في الدقيقة





OVERLAP SİSTEM TAM OTOMATİK SHRİNK AMBALAJ MAKİNASI

Lap - Over System Full Automatic Shrink Packaging Machine



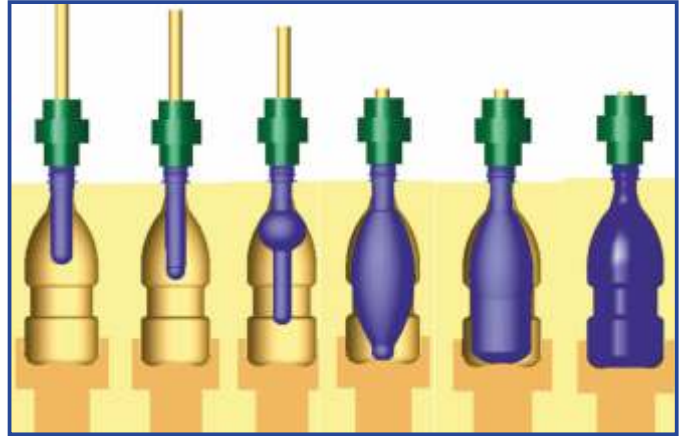
TEKNİK ÖZELLİKLER / TECHNICAL SPECIFICATION

Tünel Ölçüsü	Tunnel Dimension	400 x 700 x 2800 mm
Tünel Yükseklik	Tunnel Height	400 mm
Tünel Genişlik	Tunnel Width	700 mm
Tünel Uzunluk	Tunnel Length	2800 mm
Servo Motor	Servo Motor	2 Adet / Pcs.
Program	Programme	6 Programlı
Ekran	Screen	LCD Dokunmatik Folyo Boyu Tek Tuşla Ayarlamalı Touch Screen LCD Monitor, Film Length Measure Adjustable Only A Touch
Bobin	Roll	Tek Bobin / Single Roll
Isıtma Ünitesi	Heating Unit	2 Adet / Pcs.
Max. Ambalaj	Max. Package Dimensions	150 x 300 x 450 mm
Ambalaj Genişliği	Packaging Width	450 mm
Ambalaj Yüksekliği	Packaging Height	300 mm
Ambalaj Uzunluğu	Packaging Length	450 mm
Kapasite	Capacity	28 - 34 Paket - Dakika / Packs Per Min.
Gruplama	Grouping	6 - 12 - 20 - 24'lü Paket / Packs (0,300 CL - 0,5 - 1 - 1,5 LT)
Elektrik Besleme	Required Electricity	380 V - 3 Ph, 50 - 60 Hz.
Maksimum Güç	Max. Electric Power	27 Kw
Ortalama Güç	Electric Consumption	22 Kw/h.
Hava Tüketim Miktarı	Max. Air Consumption	600 Lt / Min.
Çalışma Basıncı	Working Pressure	6 Bar
Kesme Ünitesi	Cutting Unit	Overlap Sistem - Lap Over System
Bıçak Boyu	Knife Length	550 mm
Shrink Tünel Isı Ayarı	Shrink Tunnel Heat Adjustmen	50 - 350 C
Max. Film Kalınlığı	Max. Film Thickness	50 - 200 Mikron / Micron
Max. Rulo Genişliği	Max. Roll Length	550 mm
Uygun Film	Suitable Film	PE / Polyethylene
Toplam Makine Ölçüsü	Total Machine Dimensions	1550 x 2000 x 10000 mm
Toplam Makine Genişliği	Total Machine Width	1550 mm
Toplam Makine Yüksekliği	Total Machine Height	2000 mm
Toplam Makine Uzunluğu	Total Machine Length	10000 mm
Makine Ağırlığı	Machine Weight	5500 Kg.





PET PREFORMS



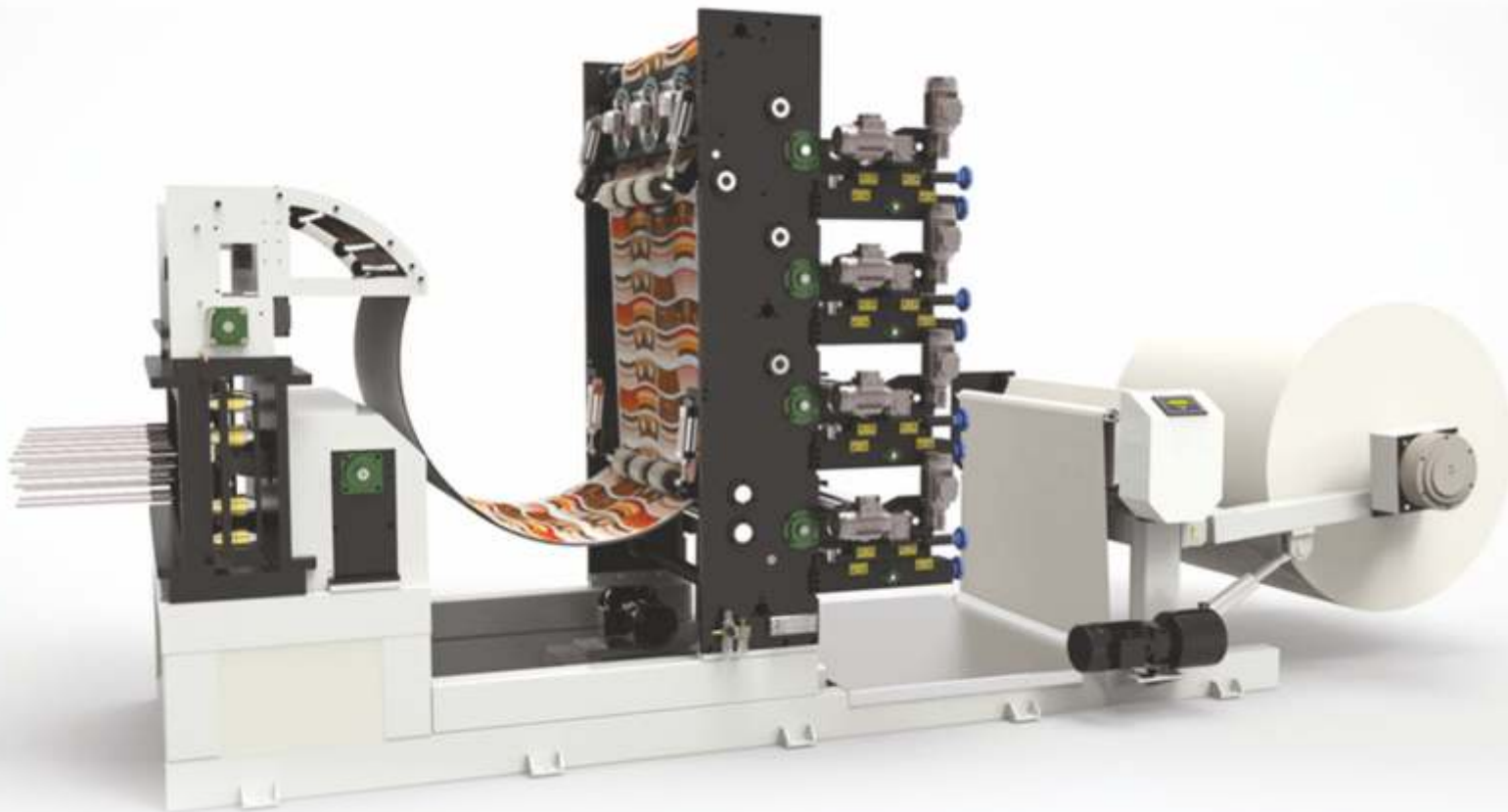


PAPER CUP MAKING MACHINE & PRINTING PUNCHING MACHINE





PAPER CUP MAKING MACHINE & PRINTING PUNCHING MACHINE





PLASTIC PRODUCTS - FOOD CONTAINERS



Plastic Cup



Plastic Spoon



Plastic Fork



Plastic Plate



Food Container



Egg Container



Food Container



Sauce Cups



EPS / ALUMINUM PRODUCTS



EPS Products



Aluminum Products



PP - PE - PET PLASTIC RAW MATERIAL





PP CUP & PLASTIC CAP





HEATING BOILER - COMBI BOILER - BURNER RADIATOR - PUMPS & BOOSTER





WORLD LEADER WATER TECHNOLOGIES COMPANIES

- Grundfos Pumps / Peerles Pumps
- Lowara Pumps
- KSB Pumps
- Wilo Pumps





EXPLOSION PROOF

Warom's product spectrum covers a wide range, including Explosion Proof light fittings, air conditioners, control stations, distribution panels, junction boxes, cable glands, etc...



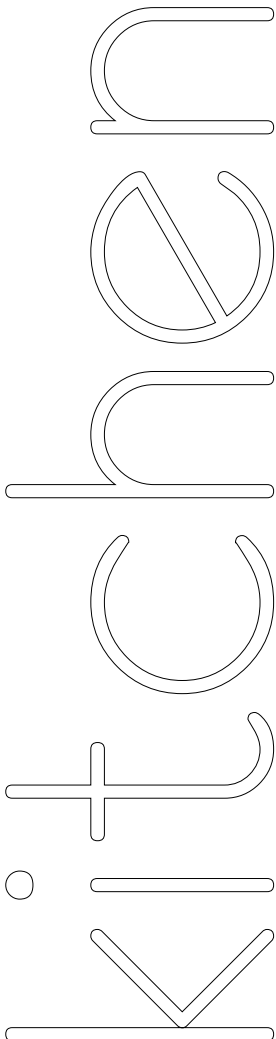


SPARE PARTS





FURNITURE





FURNITURE





FURNITURE



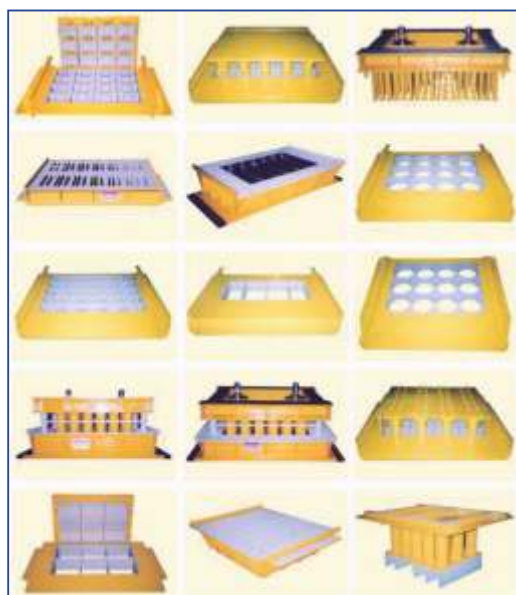


FURNITURE





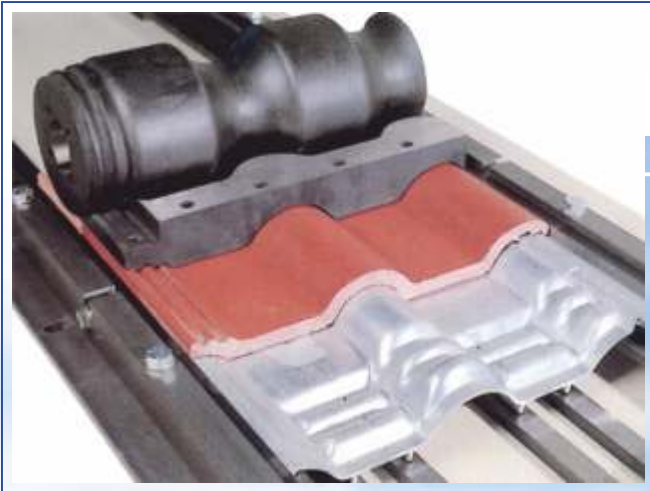
PAVING STONE







ROOF TILE







FOOD





NUTS & COFFEE





RIDING VEHICLES





GARDENING EQUIPMENTS



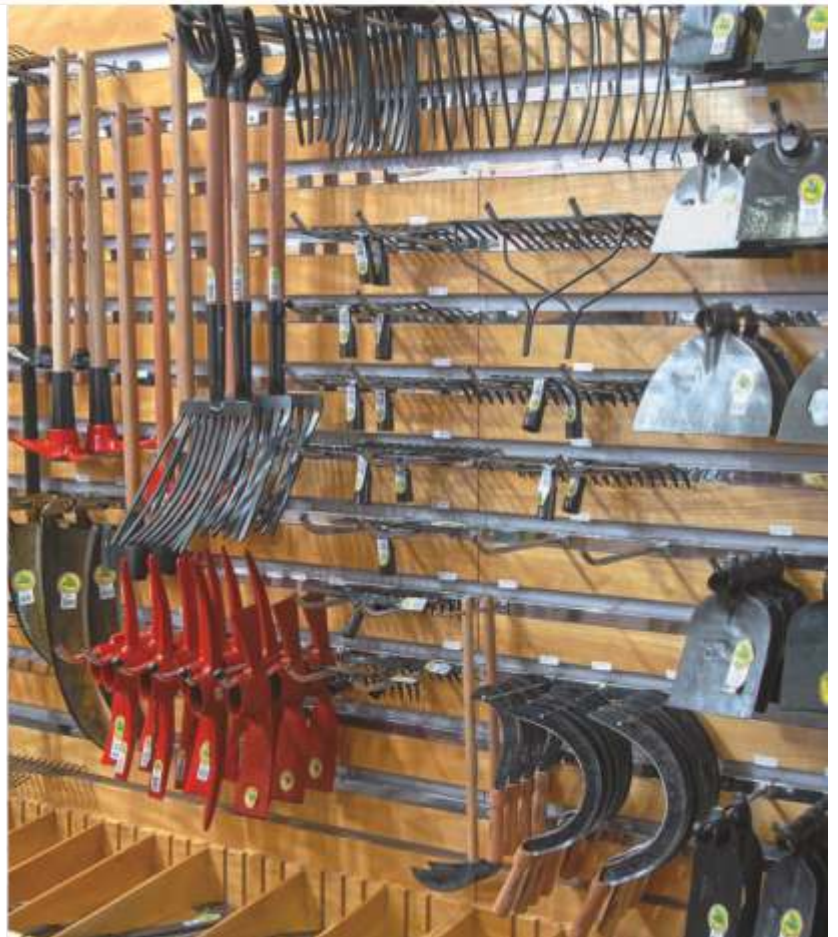


AGRICULTURE & CIVIL CONSTRUCTION TOOLS





DISPLAYS STANDS





GARDENING TOOLS





solution partner
foreign trade & maritime



Akşemsettin Mh. Halıcılar Cd. No:109/111 D:2 Fatih / İSTANBUL / TURKEY
Tel/Fax: 00 90 212 635 35 90 (Pbx) Mobile: 00 90 543 811 34 35
libyatred@gmail.com • ines.export@yahoo.com • info@inesticaret.com

www.inesticaret.com